

KGB

ಕಾವೇರಿ ಗ್ರಾಮೀಣ ಬ್ಯಾಂಕ್
KAVERI GRAMEENA BANK



CA-20, ವಿಜಯನಗರ 2ನೇ ಹಂತ,
ಮೈಸೂರು - 570 017

CA-20, ವಿಜಯನಗರ 2 ಸ್ಟೇಜ್,
ಮೈಸೂರು - 570 017

CA-20, Vijayanagar 2nd Stage,
Mysore - 570 017

NOTICE INVITING TENDER

Interior Furnishing work at KGB Urdigere Branch,
Tumakuru Region.

NOTE:

Bank invites sealed quotations from **empanelled Interior Furnishers** to carry out Interior Furnishing work at KGB Urdigere Branch of Tumkur Region. The empanelled Interior Furnishers may send sealed quotations to Kaveri Gramaena Bank, Head Office, Mysuru.

Starting Date of Tender: **16/10/2017**

Closing Date of Tender: **23/10/2017**

Sd/-

Chief Manager (Sty/Fur & Premises)

Place: Mysuru

Date: 16/10/2017

KAVERI GRAMEENA BANK, REGIONAL OFFICE, TUMKUR

**SCHEDULE FOR INTERIOR WORKS FOR K.G.B-URDIGERE BRANCH, TUMKUR
TALUK & DIST.**

Sl. No.	Items Description	Unit /qty	Rate	Amount
1	<p>CASH COUNTER : Providing and fixing of cash counter having size of 5'0" h x 3'0" w x 5'6" L. assembly with 12mm front & Horizontal glass separately, made out of 19mm commercial board and with drawer cum cabinet unit with shutter key board drawers, cable hole with PVC cap foot rest etc. all the exposed edges will have TW beadings of 0.75" and 1.25" with polish The drawer cum cabinet unit should be provided in the counters with minimum length of 4'0" of counters as per following specifications ;</p> <p>a) Providing counter top 15"00 wide to be fixed for entire length at 4"0" level made out of 12mm thick plain etched glass panel and a slit opening of 6"x 6" size.</p> <p>b) The drawers (2Nos) and the cabinet unit to be made out of 19mm commercial board as per standard design with spring hinges.</p> <p>c) Providing pigeon hole unit of approved size & design made out of 12mm pre-laminated board properly placed in between counter top and customer top including painting /polishing etc. complete as required.</p> <p>d) Providing and fixing 1.5mm thick laminate of approved make and colour using suitable adhesives in all the visible/exposed portion of the counter / drawer/ cabinet/ keyboard and all the inner / non visible surfaces including underside of the counter to be painted with synthetic enamel 2 coats over a coat of wood primer size 0.75" x 1.25"/ lippings/TW beading duly polished including the cost of all required hardware fittings, ball catches, handles piano hinges etc. as specified in the drawing.</p> <p>i) Providing and fixing 20 mm thick granite to the top of the counters with bull nosing and edge polishing:</p> <p>ii) Design band of 12 mm ply and lamination with brass /Stainless steel stud in front of the counter.</p> <p>iii) Providing and making 2.5" hole on granite top of the counter.</p> <p>iv) Providing and fixing godrej M.P. locks to counter drawer and cabinet.</p>	<p>5.00 Rft</p> <p>15.00 Sft</p> <p>5.00 Sft</p> <p>1 No</p> <p>2 Nos</p>	<p>2600.00</p> <p>360.00</p> <p>240.00</p> <p>460.00</p> <p>230.00</p>	

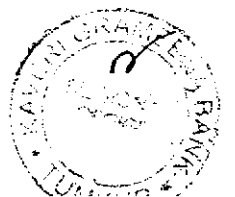
Sl. No.	Items Description	Unit /qty	Rate	Amount
2	<p>CLERICAL COUNTER /BANKING COUNTER: Providing and fixing of banking counter comprising of 4'0" length each and 2'9" wide clerical top but the rest same as in item for cash counter having all specifications including providing sliding key board drawer 2' x 1'6" with 19 mm commercial ply and T.W. frame work with sliding channels /stopping arrangements but with following specifications.</p> <p>a) Without pigeon hole racks, and slit opening but with cabinet unit as an integral part as per cash counter specification. (Customers top to be provided with 12mm thick glass with etching on borders with polishing to be provided vertically with support of wooden pillars, as per the drawing enclosed.</p> <p>i) 20 mm thick granite with nosing and edge polishing. ii) Design band of 12 mm ply and lamination with brass /stainless steel stud in front of the counter. iii) Providing and fixing godrej M.P. locks. iv) Providing and making 2.5" hole on granite top.</p>	<p>10.00 Rft 27.50 Sft 10.00 Sft 4 Nos 2Nos</p>		
3	<p>WICKET GATE with counter side partitions : Providing and fixing wicket gate in level with counter height using 19 mm block board of approved make fixing it to the counter by required frame work of teak wood. Exposed surface to be pasted with 1.2 mm thick laminate with required lipping on edges of board and polishing of teak wood frame work including all hard wares etc. complete (with counter side partition)</p>	<p>33.25 Sft</p>		
4	<p>MANAGER'S CABIN : 5' HT WOODEN PARTLY GLAZED PARTITION : Providing and fixing low height partition in level with counter height using 2" x 2" sal wood frame with 6 mm commercial ply on either side, fixing it to the counter / partition frame both exposed surface to be pasted with 1 mm thick laminate of approved pattern , make and colour including providing 12 mm thick plain etched glass panel and 3.5" x 0.75" beach wood beading on top edge of the panel with polish and melamine spray including all hardwares etc. complete. The quoted rate should include providing and fixing 7' height door shutters with glass panel with double line etching on borders, with locks, brass handles and hinges wherever necessary with all hardware accessories. The design and specification should be as per enclosed drawing. Door lock for managers cabin door.</p>	<p>192.50Sft 2 Nos</p>		



Sl. No.	Items Description	Unit /qty	Rate	Amt
5	CASH CABIN : As per the specification of item No.4 and drawing (5' height) without weld mesh cover to the window inside cash cabin. a) Door lock for cash cabin door- 1 No.	68.75 Sft 1 No		
6	CHEQUE WRITING TABLE : Providing and placing in position of table made out of 40X40 mm x 14 g of MS square hollow section for frame works with slope towards customers side of size 3.5' back / 3.25' front x 3.5' w x 1.75 L. The top of the table is made out of 3.5' x 1.75' x 19 mm commercial block board pasted with 1.5 mm laminate with suitable adhesive with all round beach wood beading with melamine polishing for beadings , with painting with 2 coats of metal primer and two coats of duco spray painting to metallic surfaces and 2 coats of wood primer with enamel paint for invisible surfaces of plywood, as per specification.	1 No		
7	NOTICE DISPLAY BOARD : Providing and fixing notice board of size 3' x 1.5' made with good quality hard wood for frame work and 12 mm thick soft board with fabric of approved colour with necessary hooks for suspending with all exposed surfaces neatly finished with melamine polish including fixing necessary Teakwood / beach wood beadings duly polished.	1 No		
8	WORKING HOURS BOARD : Providing and fixing working hours board of 2' x 1.5' size. made with 12 mm thick commercial ply pasted with 1 mm thick laminate of approved make and colour with all round teak wood / beach wood beadings including mealmine polish and suspending hooks and fixing on wall at required place.	1 No		



Sl. No.	Items Description	Unit /qty	Rate	Amount
9	STORAGE UNIT CABINET TYPE : Providing and fixing storage systems of 1.5' depth of required length and height of the cabinet made with 19 mm block board of approved make with ISI mark. The top sides and front face of the cabinet have to be pasted with 1mm thick laminated sheet. The cabinet should have required numbers of shelves / drawers with doors fitted with good quality hinges and Godrej locks, with magnet catches. All the edges of the cabinet should be provided with T.W/B.W. beadings with two coats of melamine polish and inner surfaces / and the back side of the cabinet have to be painted with two coats of wood primer and two coats of enamel painting of approved colour and make of the paints. The colour of the laminated sheet brass handles and locks and other hardware items have to be used as per the banks approved list of materials/banks prior approval.	21.75Sft		
10	SERVER CABINET TYPE : Providing and fixing server cabinet of 2'6" depth of required length and height of the cabinet made with 19 mm block board of approved make with ISI mark. The top sides and front face of the cabinet have to be pasted with 1mm thick laminated sheet. The cabinet should have required numbers of shelves.	9.00sft		
11	MANAGER'S TABLE : Managers table made with 19 mm commercial board of specified make. The external or visible surface of the table top, front and sides has to be pasted with 1.5 mm laminated sheet of beach wood colour. The table shall be provided with two sides drawer cum cabinet units with locking arrangements. All the edges of the table shall be provided with beach wood beading of 22 mm x 6mm /average in size with melamine polish, and all the invisible surface and under side of the table has to be painted with one coat of wood primer and two coats of enamel paint. The necessary hardware fittings of good quality such as hinges, handles and drawer sliding channels to be neatly fixed for drawers. The size and the design should be as per the specification and drawing (SIZE 6' 0" x 3' x 2'6" with key board and tray for CPU unit)	1 No		
Total				

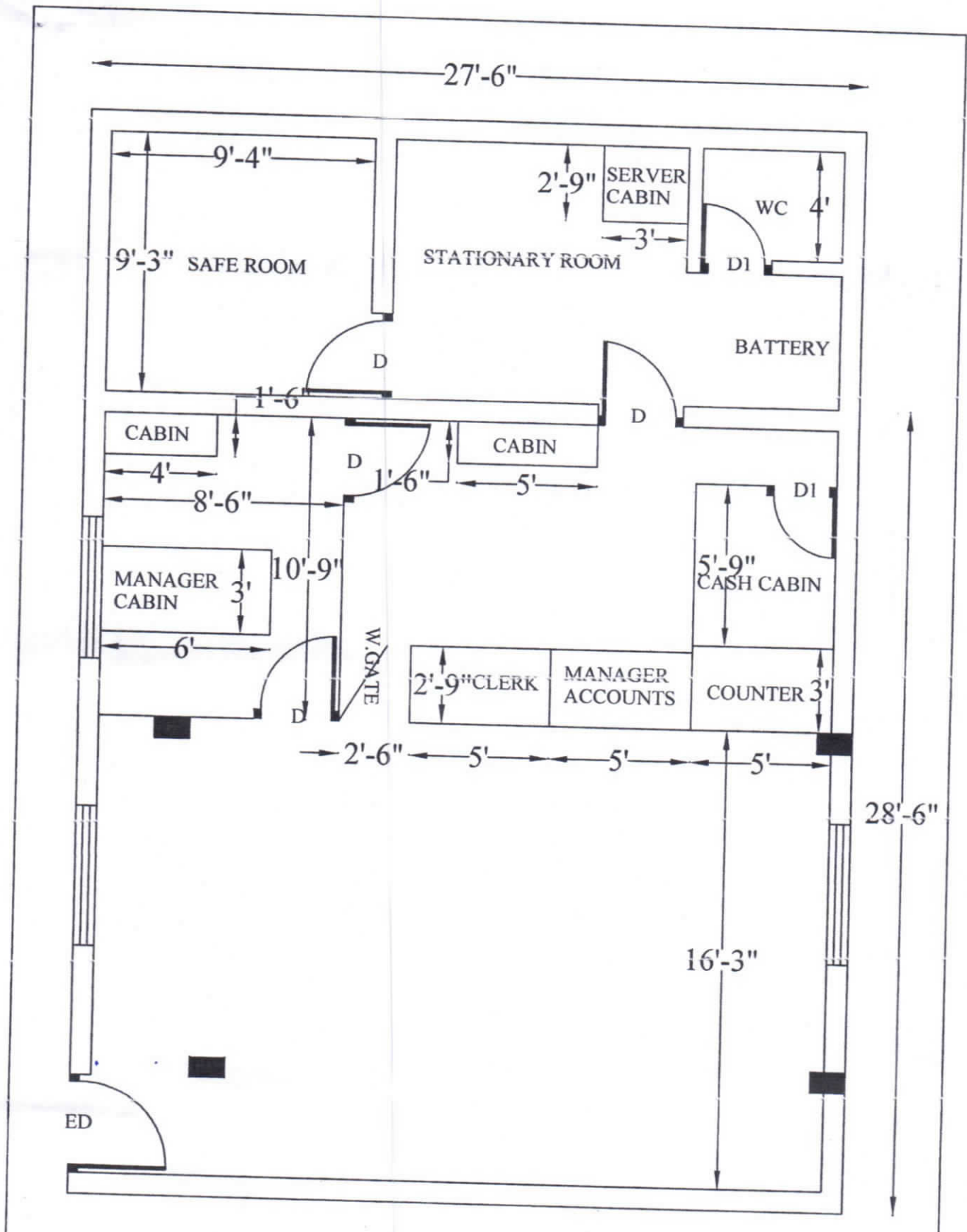


NOTE :

- THE QUOTED RATES SHALL BE INCLUSIVE OF ALL TAXES (INCOME/SALE TAX ETC)
- THE QUOTED RATES SHOULD ALSO BE INCLUSIVE OF THE COST OF DISPOSAL OF DEBRIS GENERATED OUT OF THE WORK SITE BY MECHANICAL STRANSPORTION TO CONTRACTORS LOCATION OUT SIDE THE PREMISES.
- TENDERER SHOULD ASCERTAIN THE SCOPE OF WORK AND THE QUANTITY OF THE ITEM BEFORE STARTING THE WORK AND THE MATERIALS USED SHOULD BE AS PER THE LIST ENCLOSED.
- THE TAX DEDUCTION AT SOURCE : INCOME TAX AND SALES TAX AS APPLICABLE WILL BE DEDUCTED AT SOURCE OUT OF THE BILL AMOUNT PAYABLE TO THE CONTRACTOR.

LIST OF MATERIALS TO BE USED FOR INTERIOR WORKS AT KAVERI GRAMMENA BANK

SL. NO.	MATERIALS	MAKE
1	COMMERCIAL PLY	NATIONAL / KITPLY/ SHARADA /GREENPLY/ PUMA, ARCHID TREATED WITH ANTI TERMITE TREATMENT BEFORE USE
2	PARTICAL BOARD /MDF	ARCHID, NOVAPAN, ECOBOARD , NUWUD AND BHUTHAN, NEPAL BOARDS AND SHALL BE PHENOLIC RESIN BONDED TERMITE PROOF
3	BLOCK BOARD	ARCHID , MERINO, NATIONAL, KAMMADI GOLD GREEN PLY WITH ANTI TERMITE TREATMENT OR EQUIVALENT WITH ISI AND ISO SEAL ON THE MATERIALS
4	LAMINATED SHEET	GREENLAM, DECOLAM, NEOLUX, SUNDEK, MERINO, AND NATIONAL
5	GLASS	TRIVENI, GUJARAT, ATUL MODI/ASAHI FLOAT
6	PAINT	ICI, ASIAN, BRITISH
7	VINYL FLOORING	KRISHNA VINYL, RIKVIN, PREMIER, ARMSTRONG
8	GYPNUM BOARD	INDIA GYPNUM, IDL
9	ADHESIVES	FEVICOL, VAMICOL
10	MELAMINE POLISH	ASIAN MATT FINISH
11	PRE-LAMINATED BOARD	ARCHID, NOVAPAN, ECO, BHUTHAN, NEPAL BOARD
12	LOCKS	GODREJ, ARMOR, EUROPA



INTERIOR PLAN FOR KAVERI GRAMEENA BANK PREMISES AT URDIGERE BRANCH, TUMKUR TALUK & DIST.

